

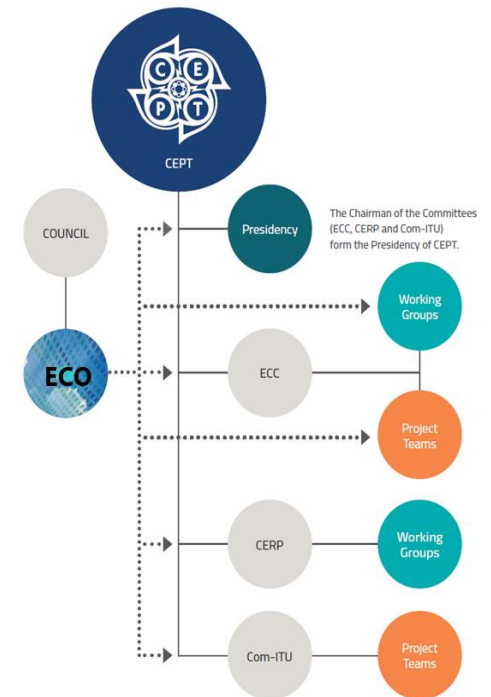
Studies at CEPT level Licensed Shared Access (LSA)

ECO: the permanent office of the CEPT

- **CEPT**: Organisation of regulators and policy makers from 48 European countries
- **ECO**: provides expert advice and administrative support to the CEPT to help it to develop and deliver its policies and decisions effectively and transparently

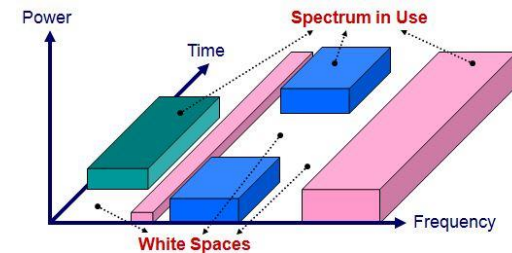


See [2020 Annual Report](#)



LSA – “the basics”

- In 2012, CEPT initiated the work aiming at generic guidelines on Licensed Shared Access and its implementation



- The LSA “sharing framework” is described in [ECC Report 205: Licensed Shared Access \(LSA\)](#)
- [ECC Decision \(14\)02: Harmonised conditions for MFCN in the 2300-2400 MHz band](#)
- [ECC Recommendation \(15\)04: Guidance for the implementation of a sharing framework between MFCN and PMSE within 2300-2400 MHz](#)
- [CEPT Report 55](#), [CEPT Report 56](#) and [CEPT Report 58](#) in response to the Mandate from the European Commission on ‘Harmonised technical conditions for the 2300-2400 MHz (‘2.3 GHz’) frequency band in the EU for the provision of wireless broadband electronic communications services’

LSA on a wider context

- “Spectrum sharing” as a cornerstone principle (as per [2020-2025 ECC Strategic Plan](#))
- There’s no “one size fits all”
- Discussion ongoing: involving different bands/applications/scenarios e.g.
 - ITS (5,9 GHz)
 - WiGig (70 GHz)
 - RLAN (5 GHz/ 6 GHz)
 - FSS vs FS (28 GHz)
 - ...
- An essential element in the [CEPT Roadmap for 5G and beyond](#)
- Trials/sandboxes needed

Thank you for your attention!

- **Contact:**
Jaime Afonso
jaime.afonso@eco.cept.org
+45 25 21 24 42
- **European Communications Office:**
www.cept.org/eco



 Follow us on Twitter – [@CEPT_ECC](https://twitter.com/CEPT_ECC)