

citibrain

**INTELLIGENT
SOLUTIONS
FOR TODAY'S CITIES**





citibrain

About us

- We are a technology group specialized in intelligent solutions for today's cities.
- Our focus is the growth initiatives Future Internet and Smart Cities, keeping global environment and urban lifestyle in mind.
- Headquartered in Aveiro, Portugal, our main purpose is to create desirable and livable places, bringing together cities and citizens to improve metropolitan life.

ubiwhere

Micro I/O
www.microio.pt

wavecom
wireless experts



Megatendências



Globalização e Urbanização

- Players globais / comércio global
- 2030: 60% da população em cidades
- Energia / edifícios / mobilidade / água infraestruturas sustentáveis



Demografia

- Pessoas com mais de 65 anos irá duplicar até 2030(de 7% para 12%)
- Em 2050 prevê-se um rácio de apenas 4 pessoas activas por cada pessoa acima dos 65 anos



Alterações Climáticas

- Cidades responsáveis por ~80% GEE
- Necessidade de tecnologias limpas, renováveis e eficientes.

Desenvolvimento urbano sustentável

- As cidades competem globalmente para serem pontos relevantes nas redes da globalização



- **Desafio do equilíbrio** entre a competitividade, ambiente e qualidade de vida



As Megatendências implicam grandes desafios para os decisores

Megatendências



Economia da Inovação

- Global players / trade volume increase
- 2030: 60% of population in cities
- Energy / buildings / mobility / water infrastructure are key



Energia do Futuro

- Consumo de energia: +5.2% p.a. nas regiões emergentes e +1.4% nos países desenvolvidos
- Disputa global pela energia

Desenvolvimento urbano sustentável

- **As cidades competem globalmente** para serem pontos relevantes nas redes da globalização



- **Desafio do equilíbrio** entre a competitividade, ambiente e qualidade de vida



UNIFIED SOLUTION S



UNIFIED SOLUTIONS

The platform provides the means for convergence across different devices and connectivity management solutions, focusing on setting up and managing use cases easily and in a unified way, via cloud-based mechanisms.

The platform focuses on Open Data formats for interoperability and on adopting M2M service standards to integrate with third-party platforms and use cases. This allows for cloud-oriented Big Data services to be implemented on top of existing or newly deployed smart cities.





UNIFIED SOLUTIONS

- Unified Management Dashboard;
- Smart City Application Marketplace;
- Standards-based Device & Connectivity Management;
- Interoperable with third-party vendor solutions
- Seamless integration with Citibrain's IOT network;





Application

S



SMART PARKING



SMART WASTE



SMART
ENVIRONMENT

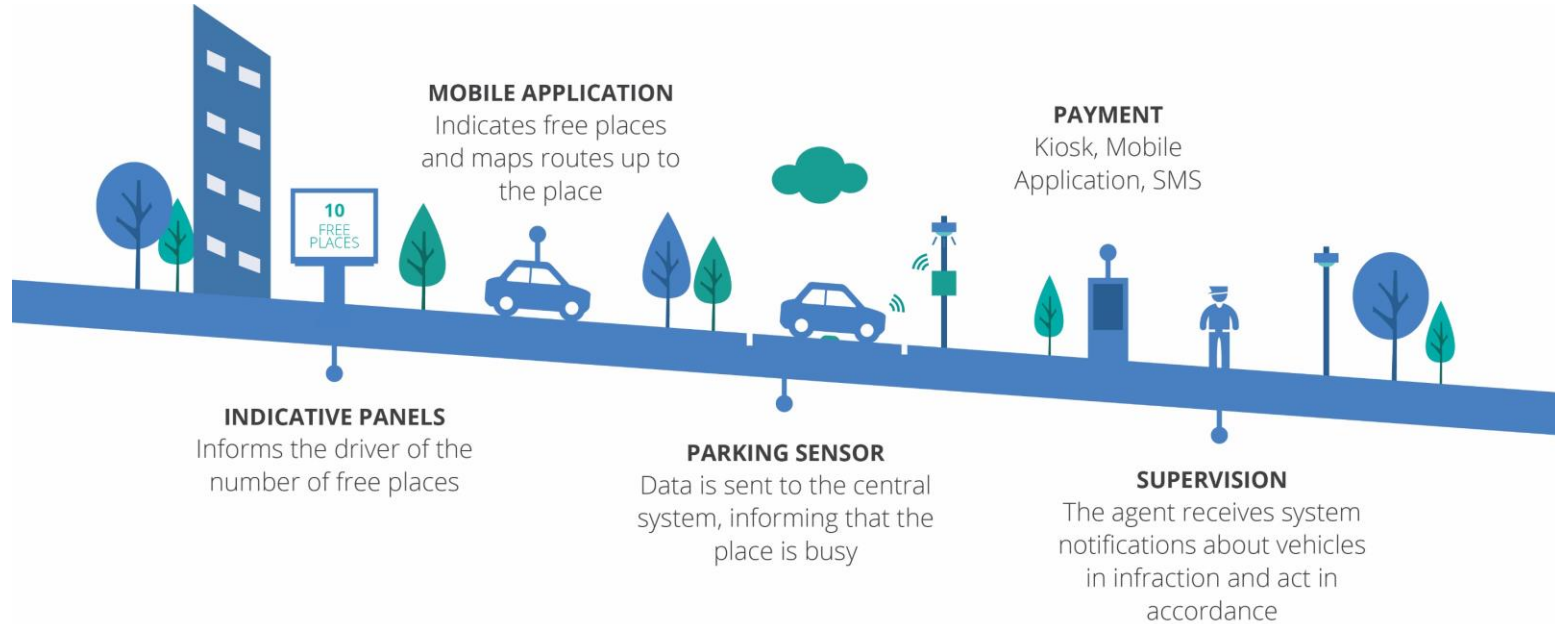


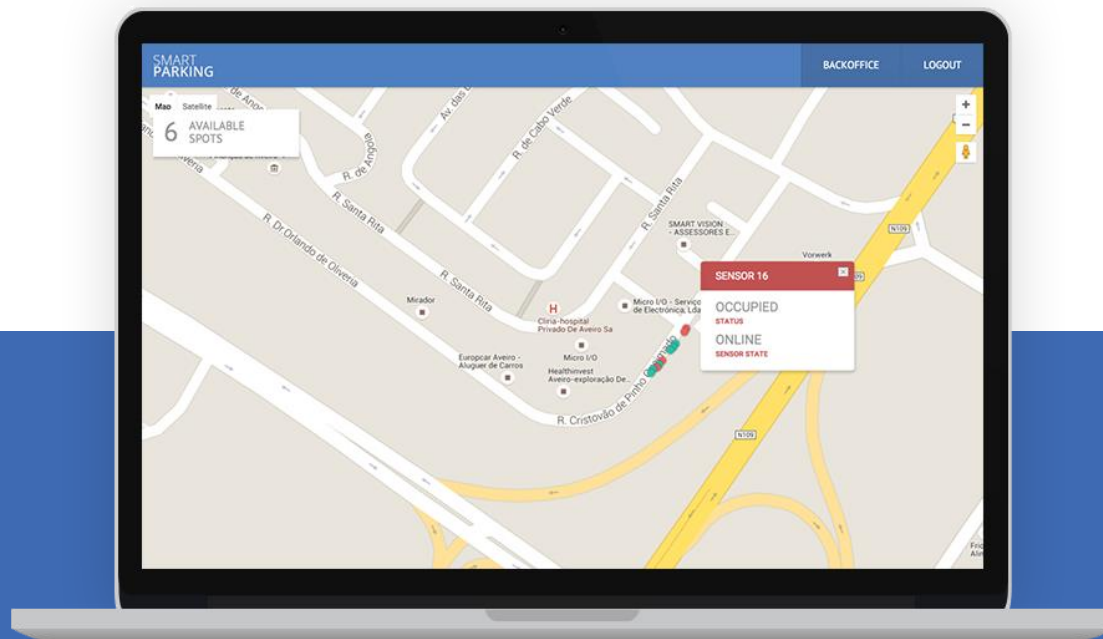


SMART PARKING

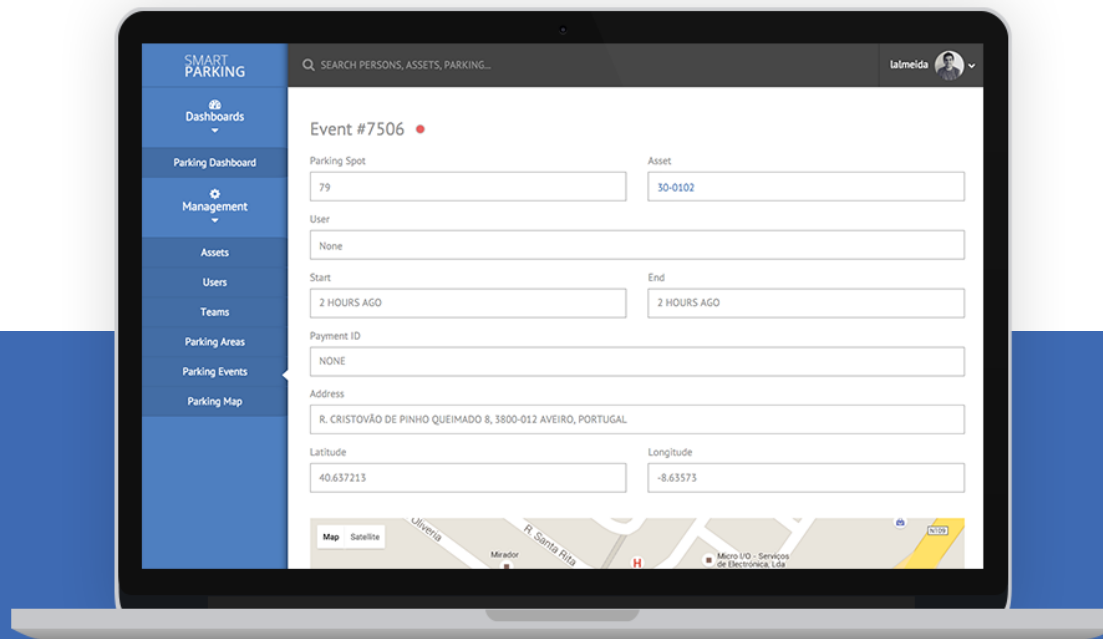
A PARKING TICKET
THAT NEVER EXPIRES

SMART PARKING – How it works





SMART PARKING



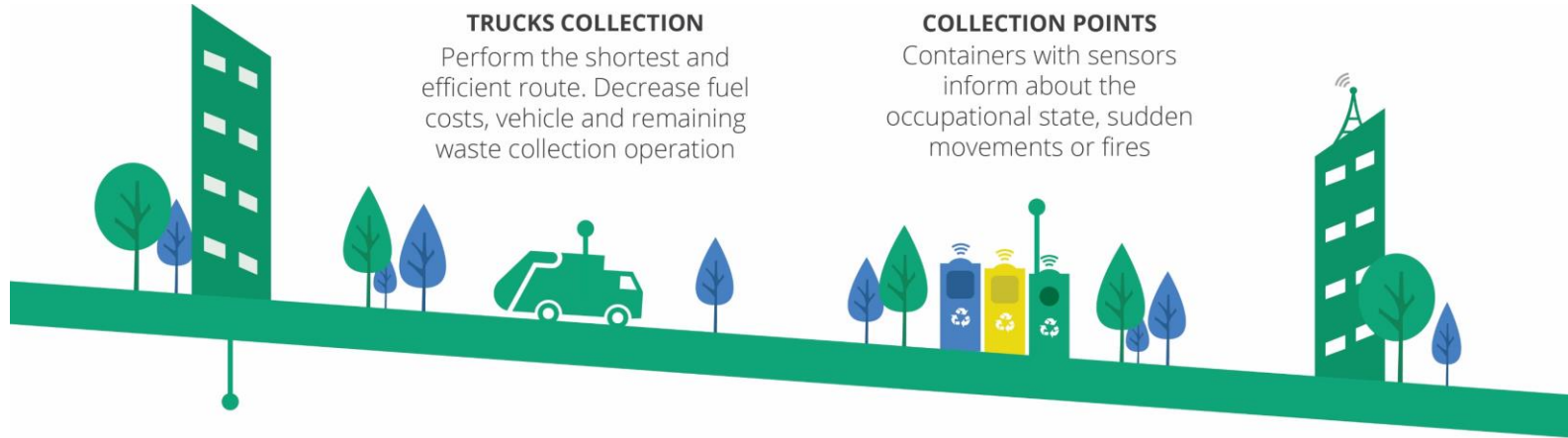
SMART PARKING



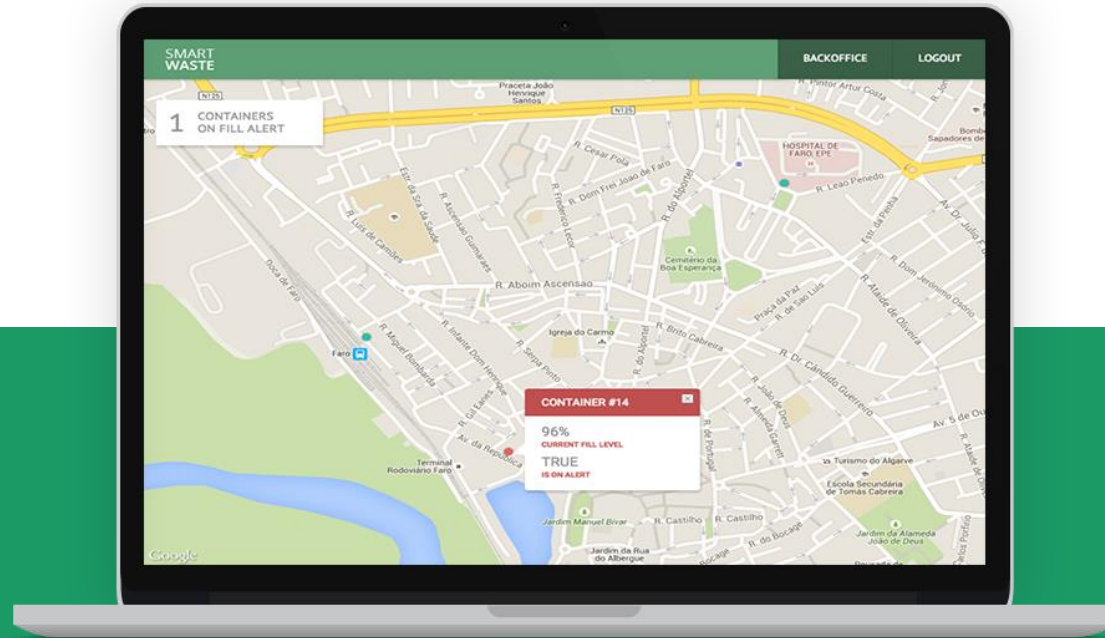
SMART WASTE MANAGEMENT

VALUE URBAN WASTE

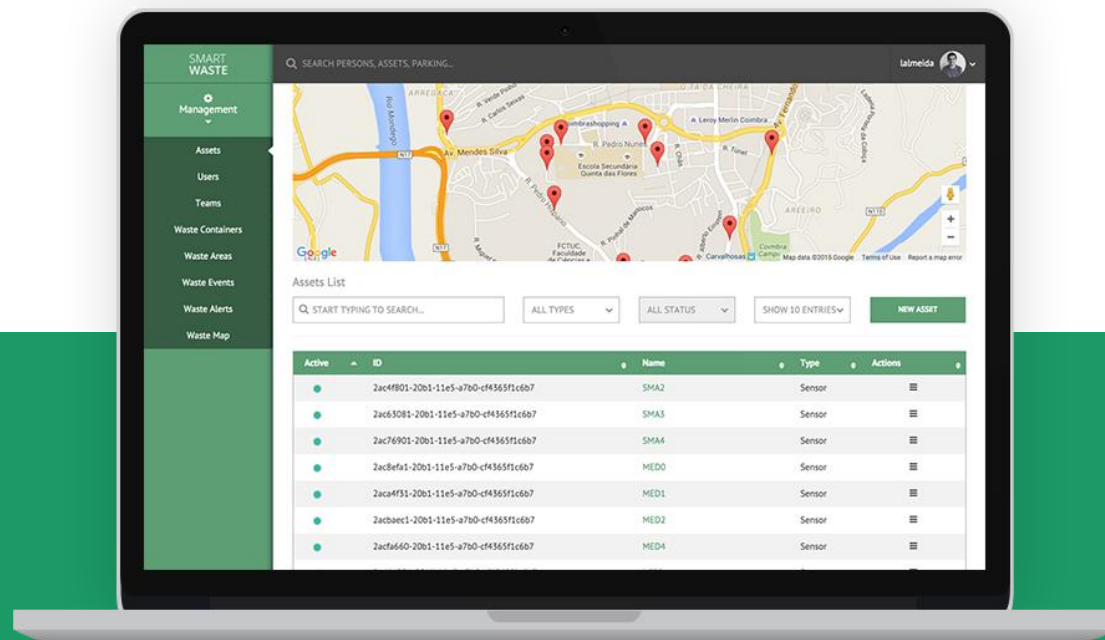
SMART WASTE MANAGEMENT – How it works



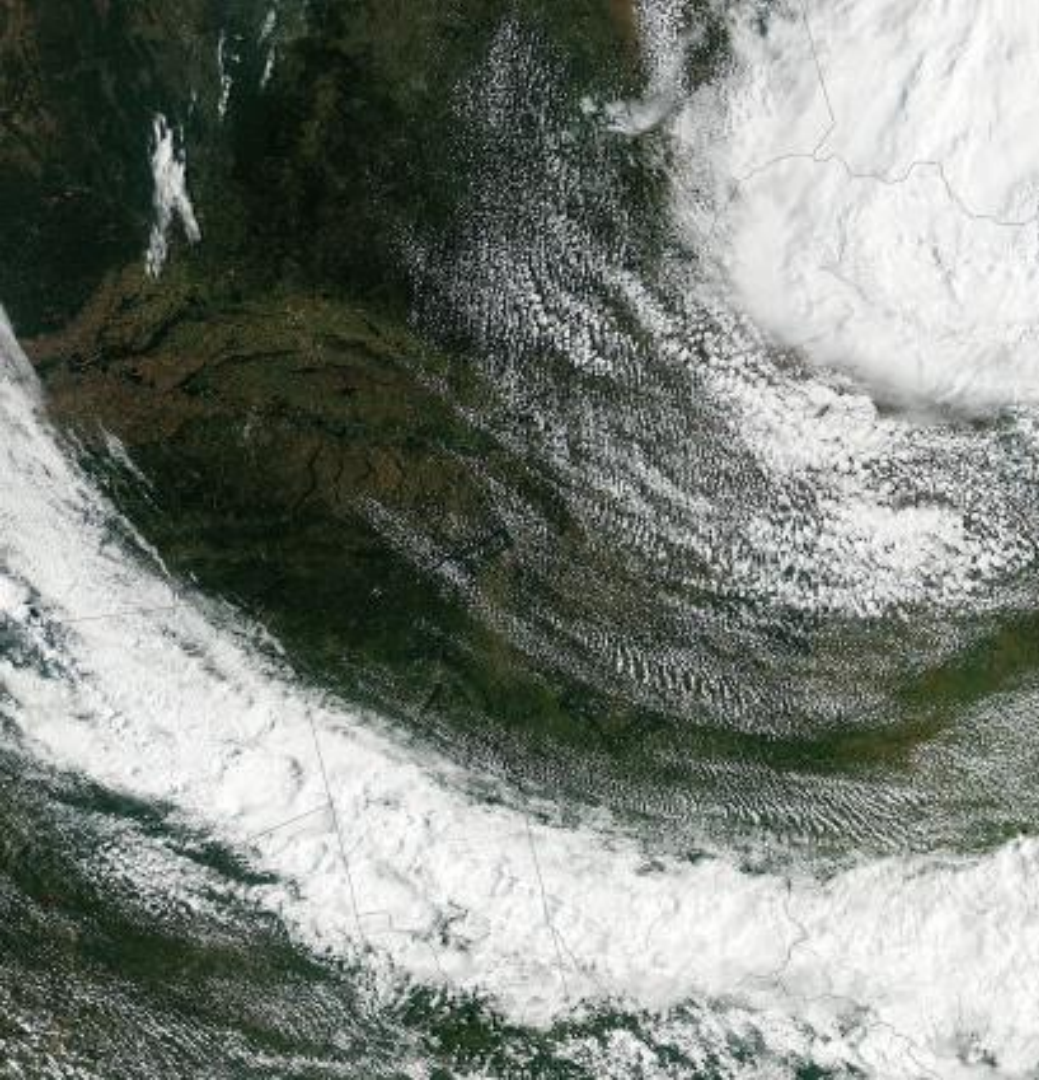
The system allows the access to waste containers through RFID cards. The garbage bags used by each citizen allow the identification, meaning that the waste placed by them will be recorded in his user account. After confirming the contents of the bags in the selection phase of the waste processing company, these "points" can be used to calculate the rate of urban waste



SMART WASTE MANAGEMENT



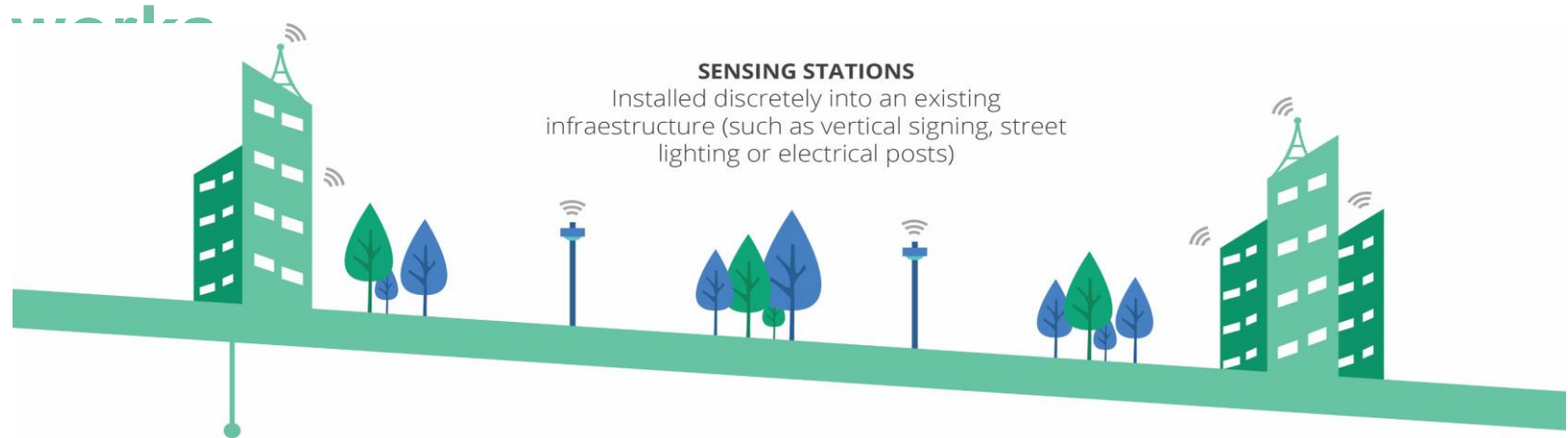
SMART WASTE MANAGEMENT



SMART ENVIRONMENTAL QUALITY

ENVIRONMENT IS AN
ESSENTIAL GOOD

SMART ENVIRONMENTAL QUALITY – How it

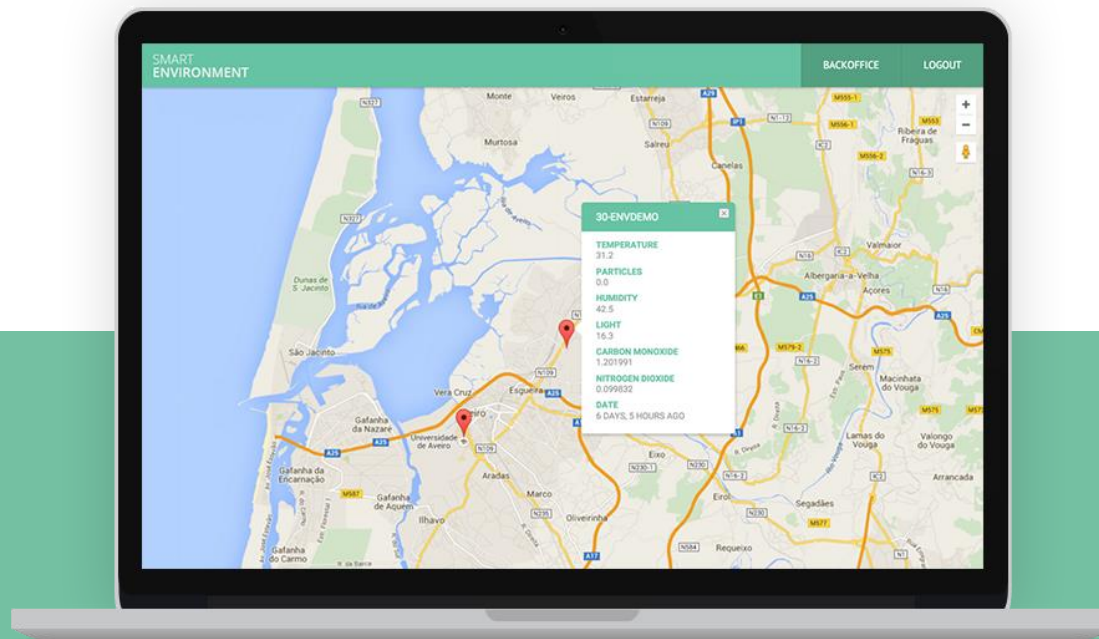


SENSING STATIONS

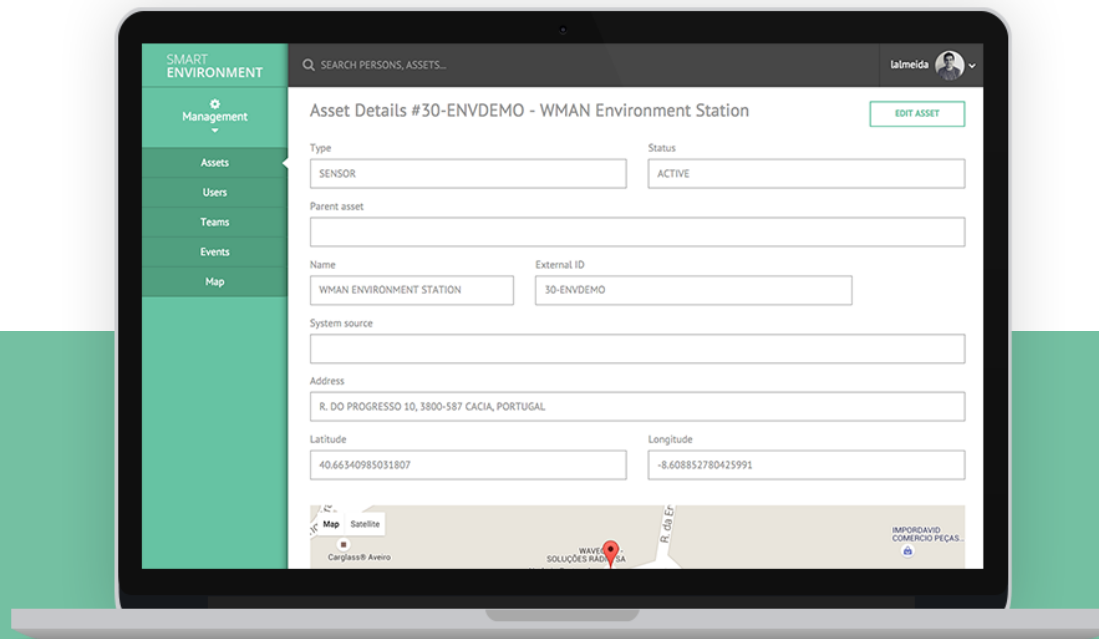
Installed discretely into an existing infrastructure (such as vertical signing, street lighting or electrical posts)

The information collected by these stations can be used to improve urban planning and strategy and the interaction with the residents of the city, but also be combined with information from other Citibrain systems to define new strategies for managing traffic, detect risk situations or emergencies, and how to measure parameters of urban space by citizens.

These stations communicate in real time with Citibrain's Core Management System (through Smart IOT Network or through Wi-Fi or GPRS), and are powered energetically by the structure in which they are installed.



SMART ENVIRONMENTAL QUALITY



SMART ENVIRONMENTAL QUALITY



citibrain

Contact

Website www.citibrain.com

Phone +351 934 459 586

Email geral@citibrain.com

